



IT management certified company

Greeting from President

Hiromoku Giken has been a special manufacturer of train car components with excellent expertise in manufacturing furniture at the foundation after changing the line of business to train products.

The passenger transportation industry is trying to reduce noise during traveling and is seeking for an advanced and best high speed train system which can provide comfortable ride.

Hiromoku Giken is responsible for providing services and high quality products in this field with expertise amassed and latest equipment. To attain the highest goal, we are making unceasing efforts.

Hiromoku Giken has grown by improving business performances and gaining a number of acclaims from customers. In this regard, we appreciate cordial supports from customers.

We strive to contribute to society through the supply of highly reliable and high quality products that win trust and satisfaction from customers.

July, 2019

Hiromoku Giken Co., Ltd.
Yoshiaki Hironaka, President

Description of company

Company name: Hiromoku Giken Co., Ltd.
Address: 2-904-15 Hayama, Kudamatsu-shi, Yamaguchi-ken
Foundation: May, 1950
Establishment: March, 1965
Capital: 15 million yen
President: Yoshiaki Hironaka
Line of business:
Special processing of aluminum
Manufacture of train car components, unit assembly and fitting
Processing of wood and manufacture of wood pattern
All businesses related to the above
Number of employees: 79 (as of July, 2016)
Dealings bank:
The Yamaguchi Bank, Ltd.
The Iyo Bank, Ltd.
Location of plant:
Head office plant
2-904-15 Hayama, Kudamatsu-shi, Yamaguchi-ken
Lot area: 7,340 m² Plant area: 4,302 m²
Office area: 400 m²
Kudamatsu plant
643 Nishitoyoi, Kudamatsu-shi, Yamaguchi-ken
Lot area: 970 m² Building area: 800 m²
Major customers:
Hitachi, Ltd.
Kawasaki Railcar Manufacturing Co., Ltd.
Japan Transport Engineering Company
Kinki Sharyo Co., Ltd.
Nippon Sharyo, Ltd.
Hitachi Transportation Technologies, Ltd.
Kotoku Industry Co., Ltd.
Kyushu Sharyo Shizai Co., Ltd.
Hiromoku Kogyo Co., Ltd.
etc.

History of Hiromoku Giken

May, 1950	Suteo Hironaka started manufacture and sales business of Japanese/Western style furniture as Hironaka Woodworking Shop at Showa-doori, Kudamatsu-shi, Yamaguchi-ken.
July, 1961	The shop was organized as Hiromoku Kogyo Co., Ltd. Hironaka Woodworking Shop was started as a furniture plant of Hiromoku Kogyo Co., Ltd.
March, 1965	The furniture plant was separated as Hiromoku Furniture Co., Ltd. and Masayuki Hironaka took office of the representative.
September, 1966	The capital was increased to two million yen. Then, the capital was increased in 1969, 1970, 1971, 1973 and 1975. With increase of the capital in 1983, the capital was 15 million yen.
September, 1985	Business was started with Hitachi Techno Engineering Co., Ltd.
September, 1986	Business was started with Kyushu Sharyo Shizai Co., Ltd.
August, 1987	Business was started with Hitachi, Ltd.
December, 1990	Business was started with Tokyu Car Corporation.
March, 1991	Business was started with Kotoku Industry Co., Ltd.
April, 1992	The company name was changed to Hiromoku Giken.
October, 1993	Business was started with Kinki Sharyo Co., Ltd.
November, 1994	Business was started with Kawasaki Heavy Industries, Ltd.
March, 1995	The main office plant was relocated and newly built at industrial complex "Shunan Koryu City".
November, 2000	Yamaguchi prefectural government approved the management innovation business plan.
April, 2002	Business was started with Nippon Sharyo, Ltd.
May, 2004	Yoshiaki Hironaka, current president, took office of the representative.
July, 2005	Chosen as the IT applied management innovation model business by the Chugoku Bureau of Economy, Trade and Industry.
January, 2006	No. 3 plant was added.
February, 2008	Chosen as the "IT management certified company" by the Ministry of Economy, Trade and Industry.
January, 2010	The 43rd Good Company Award Outstanding Performance Award in Chugoku and Shikoku Region.
May, 2010	Won the Outstanding Performance Award for Assessment of Small and Medium enterprises in Yamaguchi
August, 2010	Conferred the subsidy for the development of the products by skilled small and medium enterprises.
May, 2013	Conferred the subsidy for the development of the trial products by skilled small and medium enterprises.
March, 2014	50th anniversary of establishment is met.
June, 2016	Conferred the subsidy for the new development by manufacturing of the 2015.
June, 2019	Chosen as the "Vibrant HABATAKU Small and Medium Enterprises 300 Program" by the Ministry of Economy, Trade and Industry
July, 2019	To the present.

Hiromoku Giken continues to make efforts in full power.



No. 1 plant



North view of No. 2 plant



South view of No. 2 plant



2nd floor of No. 3 plant



Appearance of No. 3 plant



1st floor of No. 3 plant



Office



Computer room

Introduction of products

Shown below is
our products used
for your convenience.



Rail transport
in Great Britain



▲ Lower part of driving table



▲ Power distribution unit



▲ Machine room unit



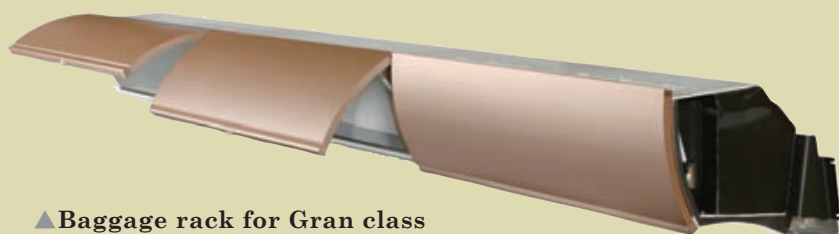
▲ Machine room unit



▲ Power distribution unit



▲ Power distribution unit



▲ Baggage rack for Gran class



▲ Panel for catering room



▲ Center ceiling for Gran Class
Ceiling reflector • Pier panel



▲ Compartment inner end partition panel



▲ Vestibule power distribution unit





Central Japan
Railway Company
West Japan
Railway Company

N700 series
Shinkansen



▲ Entrance deck corner panel



▲ Vestibule power distribution unit



▲ Machine room unit



▲ Vestibule power distribution unit
"Green (1st class)" car



▲ Vestibule power distribution unit
General car



Central Japan
Railway Company
West Japan
Railway Company

E5 series
Shinkansen
"HAYABUSA"



▲ Panel for catering room



▲ Baggage rack for Gran class



▲ Compartment inner end partition panel



▲ Center ceiling for Gran Class・Ceiling reflector・Pier panel



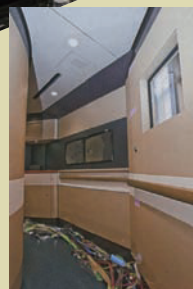
▲ Vestibule power distribution unit





Central Japan
Railway Company
West Japan
Railway Company

E6 series
Akita Shinkansen
"SUPER KOMACHI"



▲ Panel for multi purpose room



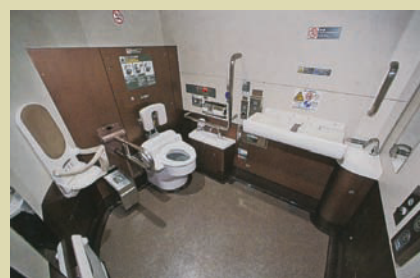
▲ Panel for vestibule and passage ceiling



▲ Frieze board



▲ Inner end partition panel



▲ Panel for multi purpose toilet



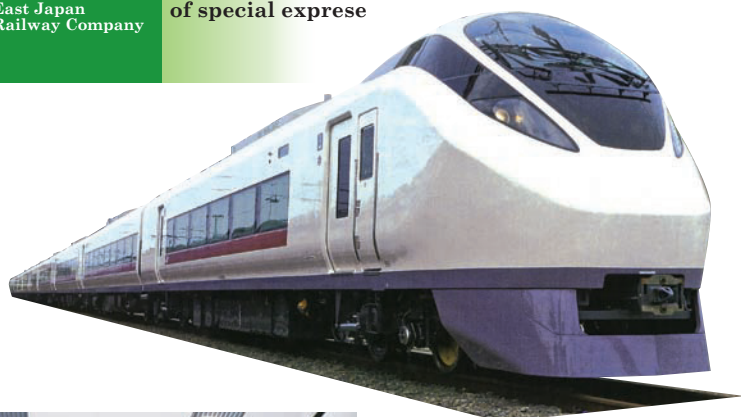
▲ Power distribution unit



▲ Inspection door for inside end



E657 series
AC-DC dual system electric railcar
of special exprese



▲ Wainscot panel



▲ Compartment inner end partition panel



▲ Vestibule power distribution unit



885 series
express type AC
train
“KAMOME”

Designed by
Hiromoku Giken



▲ Gallery corner backlit panel



▲ Handicapped person
toilet panel



▲ Hat rack type luggage shelf



▲ Various vestibule power
distribution panel unit

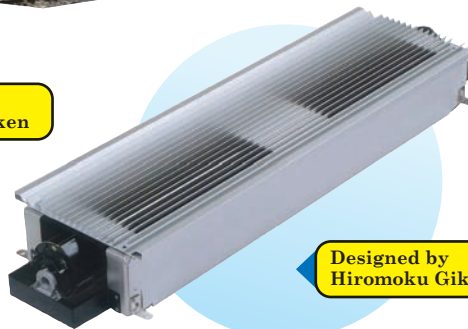


Designed by
Hiromoku Giken



▲ Side door pocket panel
and Side head jamb

Designed by
Hiromoku Giken



Designed by
Hiromoku Giken



▲ Side head jamb



▲ Linedelir air flow control plate



▲ Power distribution panel end module
End head jamb and glass partition



Designed by
Hiromoku Giken



▲ Toilet unit (815 series)



▲ Operating room back module
(Made by Hiromoku Kogyo Co., Ltd.)



▲ Side door pocket panel



▲ Door header for side entrance

Machinery & facilities



ACIES AJ SERIES

**Punch laser compound
forming machine**

Fiber laser (4kw)

High quality and high speed processing (ZR turret)

Continuous and automatic operation for a long time



Press brake

HG1703

HDS1303NT

HDS5020NT

FBD1253FS

(with roll radius bending die)

1unit

1unit

2unit

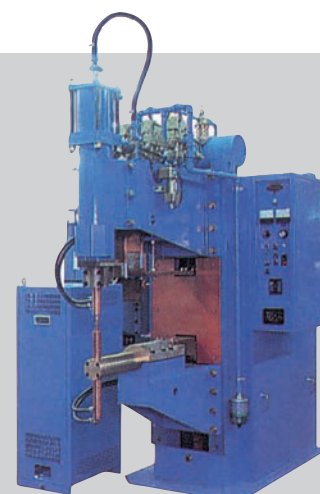
1unit



Fladder Aut (burr remover)



CNC turret punch (hydraulic)
EM 2510 M2



Capacitor spot welding machine P6A-77

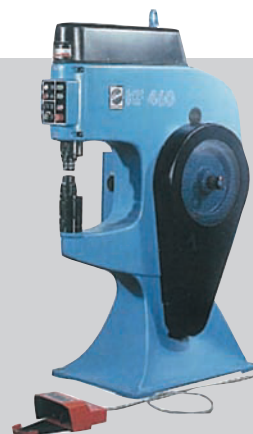
Machinery & facilities



Hot & cold press (Developed by Hiromoku Giken)

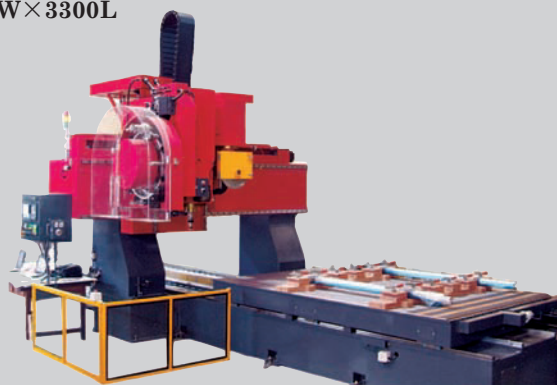


Machining center MAZAK SVC-2000L
SVC-2000L/120
VTC-200C



Kraft former KF460 (Eckold)

Large material cutter
Machining center with Tanabe saw spindle
1800W×3300L



Tensile testing equipment
AG50KNXD

Other facilities

Overhead crane (2.8ton 1ton)	3 units
Forklift truck	4 units
Vehicle	7 units
Running saw (l=3000)	1 unit
Cross-cut saw (L=4000)	1 unit
Kraft former	2 units
Grinder (belt type)	4 units
Universal bending machine	1 unit
Welding machine (argon, etc.)	7 units
Riveting machine	1 unit
Tipton barrel finisher	1 unit
Cold press	7 units

2-fluid mixing adhesive applicator	3 units
Inverter spot welding machine (40kVA)	1 unit
Inverter spot welding machine SLI (100kVA)	1 unit
Automatic welding machine DAIHEN P350	3 units
Drilling machine	5 units
Side cutter	3 units
Elevating table	1 unit
Miter cutter	3 units
Mechanical shear M3045	1 unit
Wet dust collection machine AMA50	1 unit

NC panel process machine SWG	1 unit
Corner shear CSW-250	1 unit
Setting press SP-30 (AMADA with D-SS)	1 units
PC CAD system (HICAD)	5 units
AUTO CAD	1 unit
NC data automatic programming system (AP100)	2 units
Network server system (ASIS100PCL)	1 unit
Order placement / receipt and production control system (Developed by Hiromoku Giken)	20units